

# CIRCUIT PROTECTORS FROM SANG MAO PRODUCTS

## SERIES B-1002

535290

bis

535346

**CNS Patent**

### SPECIFICATIONS:

#### \* TEMPERATURE RANGE:

75°C	95°C	120°C
80°C	100°C	130°C
85°C	105°C	140°C
90°C	110°C	145°C

\* OPERATING TOLERANCE:  $\pm 3^\circ\text{C}$ ,  $\pm 5^\circ\text{C}$ ,  $\pm 8^\circ\text{C}$ ,  $\pm 10^\circ\text{C}$ .

\* RESET DIFFERENTIAL:  $10^\circ\text{C}$ - $40^\circ\text{C}$ .

\* INPUT POWER: 32VDC/120VAC/240VAC.

\* CONTACTS TYPE: NORMAL CLOSE/NORMAL OPEN.

\* RESET TYPE: AUTO RESET.

\* CONTACTS ENDURANCE: (RESISTIVE LOAD)

32VDC X 100mA--50,000 CYCLES

120VAC X 10A--100,000 CYCLES

120VAC X 15A--30,000 CYCLES

240VAC X 6A--30,000 CYCLES

\* INTERRUPT CAPACITY: 120VAC X 60A-- 5 CYCLES.

\* OVERSHOOT TEMPERATURE:  $200^\circ\text{C}/5$  MINUTES.

\* DIELECTRIC STRENGTH: 1500VAC/1 MINUTE.

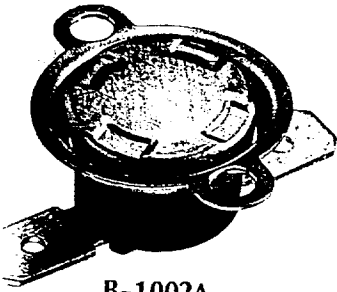
### APPROVAL:

UL APPROVAL: 10A 125VAC 100,000 CYCLES

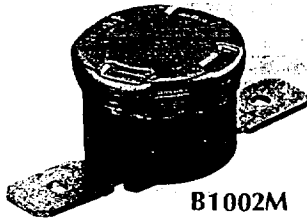
CSA APPROVAL: 10A 120VAC 100,000 CYCLES

### APPLICATIONS:

- TEMPERATURE CONTROLLER
- COFFEE MAKER
- DISH WASHER
- HOT PLATE



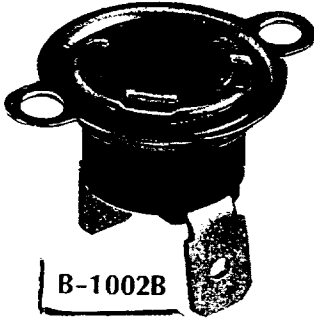
B-1002A



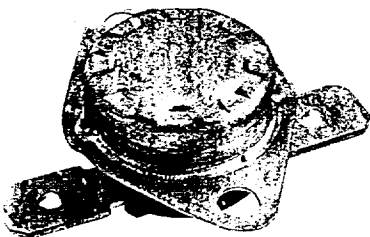
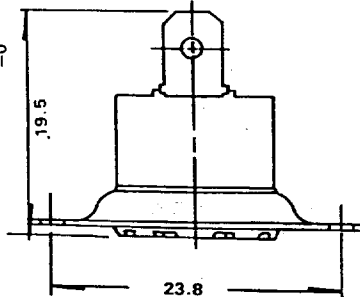
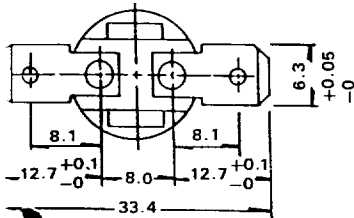
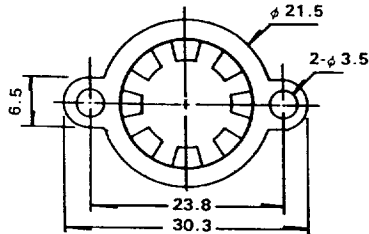
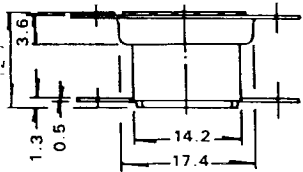
B1002M



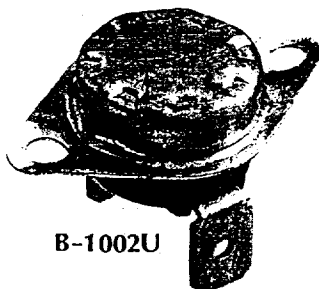
B1002N



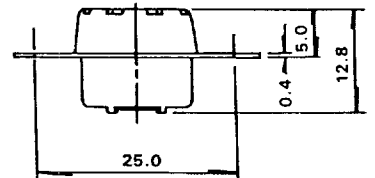
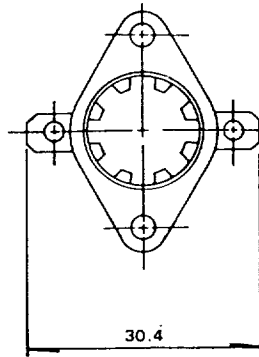
B-1002B



B-1002T



B-1002U



DIMENSION IN mm

NO EXTRA NOTIFICATION FOR PRODUCT SCALE CHANGE



## Schnappscheiben-Thermostat: Regler, Wächter, Begrenzer

weiteren vgl. Anlage Nr. 1	Antragsdatum	Aktenzeichen	web-ho	Ausstellungsdatum
-	20.08.1986	10359-4510-1001		15.09.1986

VDE-Zeichen:

Statistik 1



Beschreibung:

Geprüft nach DIN VDE 0631/12.83

Temperaturregler, Temperaturbegrenzer, Temperaturwächter

Typ	Nennstrom	Prüfklasse	Jahres- gebühren- Einheiten
KO...	16 (6) A	I	14,
	10 (6) A	I (45 000 Schaltzyklen)	
KS...	16 (6) A	I	6,
	10 (6) A	I (45 000 Schaltzyklen)	
KB...	16 (6) A	I	
KBF...	16 (6) A	I	

weitere Nennbereiche

Nennspannung	AC 250 V
Schutzklasse	I
Fühlerart	Bimetall
Schalterart	1 x Ö, 1 x S
Anbringungsart	Einbau
Verwendungstemperatur	T 236

Weitere Angaben vgl. Anlage Nr. 1

VDE-Prüfstelle  
Abt. TI

i. A.

i. A.